

The Authors of *Guide To Registering Trademarks* Present:



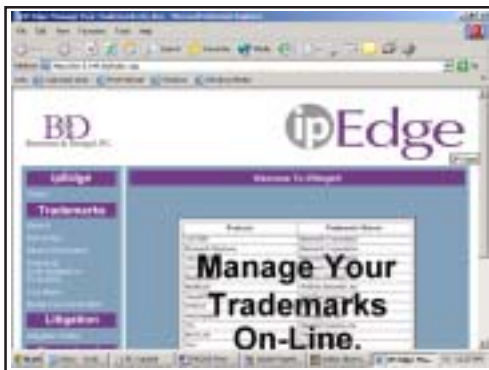
30 Day
Free Trial

The First Truly Affordable and Web-based Intellectual Property Docketing/Monitoring System

What is ipEdge?

ipEdge is an intellectual property monitoring and docketing system designed and used by practicing intellectual property attorneys which allows users (sole practitioners, law firms, corporations or individual trademark owners) to quickly and accurately docket, access and monitor the status of **trademarks, patents and litigation** anytime, anywhere at the click of a button through a secure password protected website.

Advantages Over Existing Systems:



- Costs less than all existing docketing systems;
- Easy to use web-based system – with customized company law firm appearance;
- Requires no software installation, no server for data storage and limited training;
- Secure, reliable, password protected access from anywhere in the world for law firms, corporations and trademark owners on both a right-to-edit and read-only basis 24 hours a day;
- Automatically updates trademark status information directly from the U.S.P.T.O records, eliminating delays in notification of developments in the trademark application process and avoids missed deadlines due to lost or misplaced correspondence from the U.S.P.T.O;
- Includes a proprietary **Trademark/Competitor Watch Service** of pending U.S. trademark applications; and
- Allows for document attachment of all relevant prosecution papers, assignments and pleadings directly in the records.

Visit ipEdge.com, e-mail info@ipEdge.com or call 1-877-2-IP-EDGE for a 30 day free trial, to access the system demo, or for more information.